



# MK-2000 PRO SERIES

## BRICK SAW OWNER'S MANUAL & OPERATING INSTRUCTIONS



**CAUTION:**  
Read all safety and  
operating instructions  
before using this  
equipment

Enter the Serial Number of your new saw in the space below. The Serial Number is located on the left side of the blade guard.

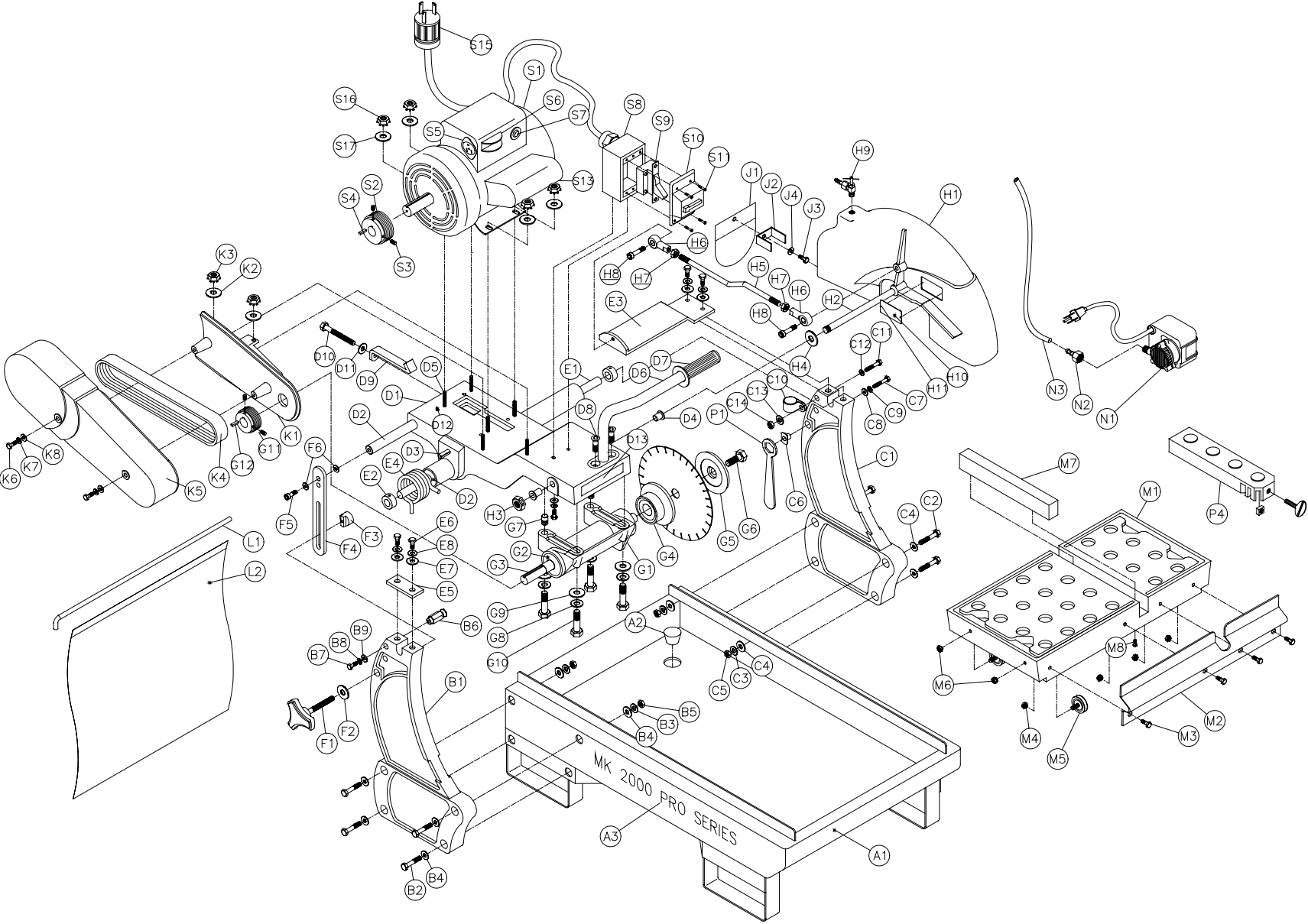
**SERIAL NUMBER:**

**NOTE:**

For your (1) one year warranty to be effective, complete the warranty card (including the Serial Number and mail it in as soon as possible.

# EXPLODED VIEW AND PARTS LIST

## EXPLODED VIEW:



## EXPLODED VIEW AND PARTS LIST

**PARTS LIST:**

Item	Description	Qty	MK P/N
A	Assembly, <b>Frame, Brick Saw</b>	1	n/a
A1	Frame, Weldment	1	158845
A2	Plug, Rubber Drain	1	153439
A3	Label, MK 2000 Brick Saw	2	155230
B	Assembly, <b>Upright, Left</b>	1	n/a
B1	Post, Left	1	158846
B2	Screw, 5/16-18 x 1 3/4, Hex Head Cap	4	150919
B3	Washer, 5/16 Split Lock	4	151747
B4	Washer, 5/16 SAE Flat	8	151754
B5	Nut 5/16-18 Hex	4	101196
B6	Stud, Spring Retaining	1	231024
B7	Screw, 5/16-18 x 1 1/2, Hex Head Cap	1	152467
B8	Washer, 5/16 Split Lock	1	151747
B9	Washer, 5/16 SAE Flat	1	151754
C	Assembly, <b>Upright, Right</b>		n/a
C1	Post	1	158846
C2	Screw, 5/16-18 x 1 3/4, Hex Head Cap	4	150919
C3	Washer, 5/16 Split Lock	4	151747
C4	Washer, 5/16 SAE Flat	8	151754
C5	Nut 5/16-18 Hex	4	101196
C6	Hanger, Wrench	1	153945
C7	Screw, 3/8-16 x 1 3/4, Hex Head Cap	1	150920
C8	Washer, 3/8 SAE Flat	1	150923
C9	Washer, 3/8 SAE Split Lock	1	150925
C10	Clamp, Cushion Loop 1/2" (elec.)	1	152471
C11	Screw, 1/4-20 x 1 3/4 Hex Head Cap	1	231233
C12	Washer, 1/4 SAE Flat	2	151915
C13	Washer, 1/4 Split Lock	1	152591
C14	Nut 1/4-20 Hex	1	151893
D	Assembly, <b>Cutting Head</b>		n/a
D1	Casting, Cutting Head, Complete	1	150583
D2	Bar, Adjustment	1	150585
D3	Pin, Split Wrist	1	151358
D4	Bushing, Plastic	2	156441
D5	Stud, 5/16-18 x 1 1/2	6	153680
D6	Handle	1	139931
D7	Grip, Handle 7/8 I.D.	1	158608
D8	Screw, 3/8-16 x 3/4, Flat Socket Head Cap Screw	2	151752
D9	Strap, Motor Adjustment	1	150584
D10	Bolt, 3/8-16 x 3 1/2 Hex Head Cap	1	153147
D11	Washer, 3/8 SAE Flat	1	150923
D12	Stud, Pulley Alignment	1	231274
D13	Caution, Owners Manual 4 x 1 1/4	1	155576

## EXPLODED VIEW AND PARTS LIST

Item	Description	Qty	MK P/N
E	Assembly, <b>Pivot Shaft</b>	1	assign
E1	Shaft, Pivot	1	154147
E2	Collar, Pivot Shaft	2	140012
E3	Bracket, Stay-Level	1	231234
E4	Spring, Torsion (4 coil)	1	231038
E5	Bracket, Pivot Shaft Retaining	1	231023
E6	Screw, 5/16-18 x 1 Button Head	4	151698
E7	Washer, 5/16 SAE Flat	4	151754
E8	Washer, 5/16 Split Lock	4	151747
F	Assembly, <b>Cutting Head Height Adjustment</b>	1	n/a
F1	Knob, Tri (w/ 3/8-16 x 2 1/2 Stud)	1	231039
F2	Washer, 3/8 SAE Flat	1	150923
F3	T-Nut	1	231040
F4	Bracket, Height Adjustment	1	156839
F5	Screw, 1/2 x 1/2 Socket Hd. Shoulder, (3/8-16 x 1/2 Thread)	1	151753
F6	Washer, 1/2 SAE Flat	2	150923
G	Assembly, <b>Blade Shaft</b>	1	n/a
G1	Blade Shaft-Arbor, Complete	1	153791
G2	Bearing, Blade Shaft	2	154594
G3	Shaft, Arbor	1	154639
G4	Flange, Inner	1	154640
G5	Flange, Outer 14 Inch M-Saw	1	132290
G6	Screw, 1/2-20 x 1 1/4, Hex Head Cap	1	152122
G7	Pin, Arbor Alignment	2	153946
G8	Washer, 5/16 Split Lock	4	151747
G9	Washer, 5/16 SAE Flat	4	151754
G10	Screw, 5/16-18 x 2 1/4	4	153951
G11	Pulley, 2 Groove, 2-1/2 x 5/8	1	133157
G12	Key, 1 1/8 x 3/16	1	150344
H	Assembly, <b>Blade Guard</b>	1	n/a
H1	Blade Guard	1	158886
H2	Stud, Blade Guard Pivot	1	150581
H3	Nut, 1/2-20 Lock	1	153943
H4	Shim, 1/2	1	153952
H5	Rod, Adjustment Blade Guard	1	231052
H6	Ball Joint Rod End, Stamped, 3/8-24	2	156521
H7	Nut, Jam 3/8-24	2	231054
H8	Screw, 3/8 x 1/2 Shoulder, 5/16-18 x 1/2 Thread	2	231246
H9	Valve, Miniature Ball, 1/4 Male / Female	1	231248
H10	Tag, Serial	1	157007
H11	Tack, Metal 1/4 Hd.	2	155659
H12	Label, Warning, Blade Guard Failure	1	155588
J	Assembly, <b>Splash Guard</b>		n/a
J1	Curtain, Blade Guard	1	152417
J2	Bracket, Water Curtain	1	152723
J3	Screw, 1/4-20 x 1/2, Hex Head Cap	1	152608
J4	Washer, 1/4 SAE Flat	1	151915

## EXPLODED VIEW AND PARTS LIST

Item	Description	Qty	MK P/N
K	Assembly, <b>Belt Guard</b>	1	n/a
K1	Belt Guard Inner	1	150590
K2	Washer, 3/8 SAE Flat	2	150923
K3	Nut, 5/16-18 Hex (w/ external tooth washer)	2	153942
K4	Belt, V AX-32	2	151723
K5	Belt Guard Outer	1	158867
K6	Screw, 5/16-18 x 1 3/4, Hex Head Cap	2	150919
K7	Washer, 5/16 Lock Split	2	151747
K8	Washer, 5/16 SAE Flat	2	151754
K9	Caution, Guard Removal 3 x 1 1/2	1	155587
L	Assembly, <b>Splash Curtain</b>	1	n/a
L1	Rod, Splash Curtain	1	153956
L2	Curtain, Rear	1	152417
M	Assembly, <b>Table</b>	1	133082
M1	Table	1	153790
M2	Stop-Rule, Table	1	134387
M3	Screw, 1/4-20 x 3/4 Hex Head Cap	4	152504
M4	Nut, 1/4-20, Hex w/ External Tooth Washer	4	153941
M5	Wheel Roller	4	133090
M6	Nut, 5/16-18, Hex w/ External Tooth Washer	4	153942
M7	Wood Strip, Table Insert	1	156427
M8	Screw, Pan HD Phil. #8 x1	2	151047
M9	Sticker, Inspected By: (not shown)	1	n/a
N	Assembly, <b>Pump Electric</b>	1	n/a
N1	Pump, Water G-150A	1	151271
N2	Adapter, Plastic MNPT x 1/4 FNPT	1	151018
N3	Hose, Vinyl 1/4 ID	3 Ft.	132951
N4	Owner's Manual, Water Pump G-150A	1	155745
N5	Carton, Water Pump G-150A	1	154016
N6	Insert, Foam Water Pump G-150A	1	154017
P	Assembly, <b>Accessory Pack</b>	1	n/a
P1	Wrench, Masonry Saw	1	134056
P2	Carton, Accessory (not shown)	1	153575
P3	Insert, Accessory (not shown)	1	153576
P4	Assembly, Rip Guide, Large	1	n/a
	Rip Guide, Large (Comp)	1	132332
	Screw, 5/16-18 x 1 1/2 Thumb	1	150303
	Nut, 5/16-18 Square	1	151156
P5	Warranty Card	1	155037
P6	Sell Sheet, Tile Accessory	1	156915
P7	Owners Manual, MK-2000 Pro Series	1	158753

## EXPLODED VIEW AND PARTS LIST

Item	Description	Qty	MK P/N
SB	Assembly, <b>Mtr 110/220v 1 Ph 60 Hz 2 Hp</b>		n/a
SB1	Motor, 115/230v 60 Hz 2 Hp	1	231095
SB2	Pulley, 2 Groove, 2 -1 /2 x 3/4	1	231083
SB3	Screw, 5/16-18 x 1/4, Set	2	231239
SB4	Key, 1-1/8 x 3/16	1	150344
SB5	Receptacle, 20 Amp 115 volt	1	154621
SB6	Switch, Voltage Change	1	150577
SB7	Switch, Thermal Overload TPMISJ24AB	1	153503
SB8	Box, Switch	1	139758
SB9	Switch, On/Off 30 Amps/250 volts	1	139741
SB10	Cover, Switch Box	1	139766
SB11	Screw, 10-32 x 1/4 Slotted Round Head Machine	4	231090
SB12	Screw, 1/4-20 x 3/4 Hex Head	2	152676
SB13	Capacitor, HSG	1	150574
SB14	Capacitor, Oil MK2000 OC3020F12	1	152412
SB15	Plug, Twist Lock 20 Amp125 volt (NEMAL520P)	1	154556
SB16	Nut, 5/16-18 w/ External Tooth Washer	4	153942
SB17	Washer, 5/16 SAE, Flat	4	151754
SB18	Warning, Cord Selection 2 3/4 x 2 1/2	1	155672
SB19	Caution, Ground Fault Interrupter 2 1/8 x 1	1	155678
SB20	Attachment for Water Pump 1 1/2 x 3/4	1	154408
SB21	Motor, Cool Push 1 x 5/8	1	154409
SC	Assembly, <b>Mtr 110/220v 1 Ph 50 Hz 2 Hp</b>		n/a
SC1	Motor, 115/230v 50 Hz 2 Hp	1	231096
SC2	Pulley, 2 Groove, 2 -1 /2 x 3/4	1	231083
SC3	Screw, 5/16-18 x 1/4, Set	2	231239
SC4	Key, 1 - 1/8 x 3/16	1	150344
SC5	Receptacle, 20 Amp 115 volt	1	154621
SC6	Switch, Voltage Change	1	150577
SC7	Switch, Thermal Overload TPMISJ24AB	1	153503
SC8	Box, Switch	1	139758
SC9	Switch, On/Off 30 Amps/250 volts	1	139741
SC10	Cover, Switch Box	1	139766
SC11	Screw, 10-32 x 1/4, Slotted Round Head Machine	4	231090
SC12	Screw, 1/4 - 20 x 3/4 Hex Head	2	152676
SC13	Capacitor, HSG	1	150574
SC14	Capacitor, Oil MK2000 OC3020F12	1	152412
SC15	Plug, Twist Lock 20 Amp125 volt (NEMAL520P)	1	154556
SC16	Nut, 5/16-18 w/ External Tooth Washer	4	153942
SC17	Washer, 5/16 SAE, Flat	4	151754
SC18	Warning, Cord Selection 2 3/4 x 2 1/2	1	155672
SC19	Caution, Ground Fault Interrupter 2 1/8 x 1	1	155678
SC20	Attachment for Water Pump 1 1/2 x 3/4	1	154408
SC21	Motor, Cool Push 1 x 5/8	1	154409

## EXPLODED VIEW AND PARTS LIST

Item	Description	Qty	MK P/N
SD	Assembly, <b>Mtr 110/220v 1 Ph 60 Hz 3 hp</b>		n/a
SD1	Motor, 115/230v 60 Hz 3 hp (saw duty)	1	158752
SD2	Pulley, 2 Groove, 2 -1/2 x 3/4	1	231083
SD3	Screw, 5/16-18 x 1/4, Set	2	231239
SD2	Pulley, 2 Groove, 2 -1/2 x 3/4	1	231083
SD3	Screw, 5/16-18 x 1/4, Set	2	231239
SD4	Key, 1 - 1/8 x 3/16	1	150344
SD5	Receptacle, 20 Amp 115 volt	1	154621
SD6	Switch, Voltage Change	1	150577
SD7	Switch, Thermal Overload TPMISJ24AB	1	153503
SD8	Box, Switch	1	139758
SD9	Switch, On/Off 30 Amps/250 volts	1	139741
SD10	Cover, Switch Box	1	139766
SD11	Screw, 10-32 x 1/4, Slotted Round Head Machine	4	231090
SD12	Screw, 1/4 - 20 x 3/4 Hex Head	2	152676
SD13	Capacitor, HSG	1	150574
SD14	Capacitor, Oil MK2000 OC3020F12	1	152412
SD15	Plug, Twist Lock 20 Amp 125 volt (NEMAL520P)	1	154556
SD16	Nut, 5/16-18 w/ External Tooth Washer	4	153942
SD17	Washer, 5/16 SAE, Flat	4	151754
SD18	Warning, Cord Selection 2 3/4 x 2 1/2	1	155672
SD19	Caution, Ground Fault Interrupter 2 1/8 x 1	1	155678
SD20	Attachment for Water Pump 1 1/2 x 3/4	1	154408
SD21	Motor, Cool Push 1 x 5/8	1	154409