



# MK- 2005G

**GAS POWERED BRICK SAW  
OWNER'S MANUAL &  
OPERATING INSTRUCTIONS**



**CAUTION:**

Read all safety and operating instructions before using this equipment

Enter the Serial Number of your new saw in the space below. The Serial Number is located on the left side of the blade guard.

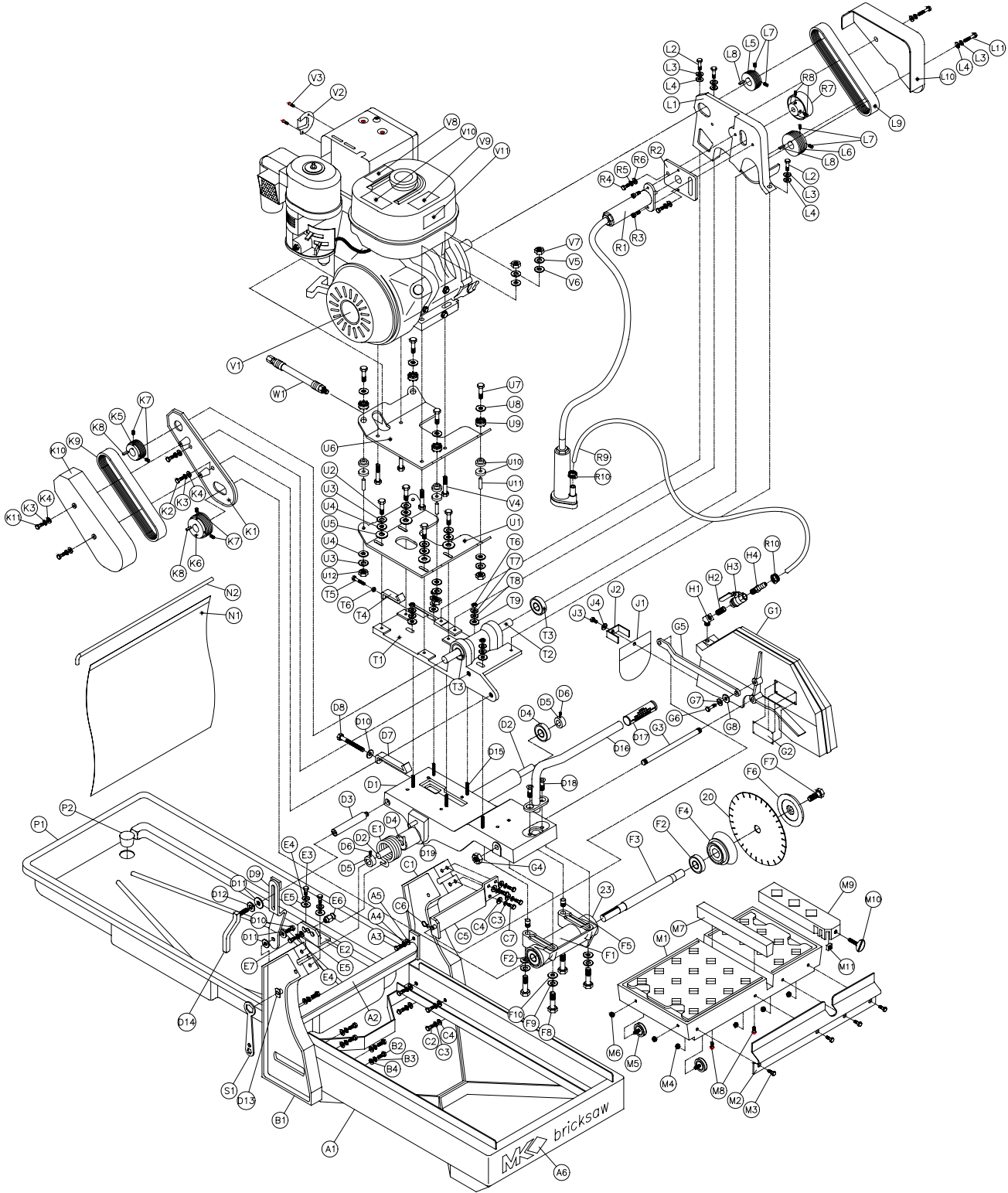
**SERIAL NUMBER:**

**NOTE:**

For your (1) one year warranty to be effective, complete the warranty card (including the Serial Number and mail it in as soon as possible.

# EXPLODED VIEW AND PARTS LIST

## EXPLODED VIEW:



## ENGINE GUARD INSTALLATION INSTRUCTION

### PARTS LIST:

Item	Description	Qty	MK p/n
<b>A</b>	<b>Assembly, Frame, MK2000 Brick saw</b>	<b>1</b>	<b>-</b>
A1	Frame, MK-2000	1	150595
A2	Crossbar, Support	1	150594
A3	Screw, 5/16-18 x 1 Hex Head Cap	1	151743
A4	Washer, 5/16 Split Lock	4	151747
A5	Washer, 5/16 SAE Flat	4	151754
A6	Label, MK Brick saw 12 – 1/2 x 1-3/4	1	155230
<b>B</b>	<b>Assembly, Upright Left</b>	<b>1</b>	<b>-</b>
B1	Casting, Upright Left	1	150592
B2	Screw, 5/16-18 x 3/4, Hex Head	6	151369
B3	Washer, 5/16 Split Lock	6	151747
B4	Washer, 5/16 SAE Flat	6	151754
<b>C</b>	<b>Assembly, Upright Right</b>	<b>1</b>	<b>-</b>
C1	Casting, Upright Right	1	150593
C2	Screw, 5/16-18 x 3/4, Hex Head	6	151369
C3	Washer, 5/16 Split Lock	10	151747
C4	Washer, 5/16 SAE Flat	10	151754
C5	Bracket, Blade Guard (Stay Level)	1	150582
C6	Clip, Hairpin 1/4 Shaft	1	153953
C7	Screw, 5/16 x 1 Hex Head Cap	4	151743
<b>D</b>	<b>Assembly, Cutting Head</b>	<b>1</b>	<b>-</b>
D1	Casting, Cutting Head	1	150583
D2	Shaft, Pivot	1	154147
D3	Stud, Height Adjustment	1	150585
D4	Bearing, Pivot Shaft	2	140004
D5	Collar, Pivot Shaft	2	140012
D6	Screw, 5/16-8 x 3/16 Socket Head Set	2	151167
D7	Strap, Motor Adjustment	1	150584
D8	Bolt, 3/8-16 x 3 1/2 Hex Head Cap	1	153147
D9	Bracket, Cutting Head Height Adjustment	1	156839
D10	Screw, 3/8-16 x 1 1/2	1	153528
D11	Washer, 3/8 SAE Flat	3	150923
D12	Washer, 3/8 Split Lock	1	150925
D13	Nut, T Plan Slab Weld	1	153945
D14	Handle, Cutting Head Height Adjustment Lock Nut,	1	151140
D15	Stud, 5/16-18 x 2	6	156959
D16	Handle	1	139931
D17	Grip, Handle	1	139949
D18	Screw, 3/8-16 x 1 Flat Head Screw Cap	2	154019
D19	Pin, Split Wrist	1	151358
<b>E</b>	<b>Assembly, Pivot Spring</b>	<b>1</b>	<b>-</b>
E1	Spring, Torsion Pivot	1	150587
E2	Bracket, Spring Adjustment	1	150589
E3	Screw, 5/16-18 x 1 Hex Head	2	151743
E4	Washer, 5/16 Split Lock	3	151747
E5	Washer, 5/16 SAE Flat	3	151754
E6	Stud, Retaining Spring	1	153788
E7	Screw, 5/16-18 x 3/4 Hex Head	1	151369

## EXPLODED VIEW AND PARTS LIST

Item	Description	Qty	MK p/n
<b>F</b>	<b>Assembly, Blade Shaft</b>	<b>1</b>	<b>154636</b>
F1	Casting, Blade Shaft-Arbor	1	153791
F2	Bearing, Blade Shaft	2	154594
F3	Shaft, Blade	1	154639
F4	Flange, Inner	1	154640
F5	Pin, Arbor Alignment	2	153946
F6	Flange, Outer 14 Inch M-Saw	1	132290
F7	Screw, 1/2-20 x 1 1/4, Hex Head (Blade Bolt)	1	152122
F8	Screw, 5/16-18 x 2 -1/4	4	153951
F9	Washer, 5/16 Split Lock	4	151747
F10	Washer, 5/16 SAE Flat	4	150923
<b>G</b>	<b>Assembly, Blade Guard</b>	<b>1</b>	<b>-</b>
G1	Casting, Blade Guard	1	150579
G2	Tag, Serial Number MK-2000	1	157007
G3	Shaft, Blade Guard Bolt	1	150581
G4	Nut, 1/2-13 Hex Lock, Top	1	153943
G5	Bar, Adjustment Blade Guard (Stay Level)	1	150580
G6	Screw, 3/8-16 x 1 Hex Head	1	152507
G7	Washer, 3/8 Split Lock	1	150925
G8	Washer, 3/8 SAE Flat	1	150923
<b>H</b>	<b>Assembly, Water Control Valve</b>	<b>1</b>	<b>-</b>
H1	Elbow, Street 45 1/4 MNPT	1	153869
H2	Nipple, 1/4 MNPT x Close	1	152598
H3	Valve, Female Ball - 1/4 Pipe	1	152597
H4	Fitting, 1/4 MNPT x 1/2 Barb	1	152704
<b>J</b>	<b>Assembly, Splash Guard</b>	<b>1</b>	<b>-</b>
J1	Curtain, Blade Guard	1	152417
J2	Bracket, Water Curtain	1	152723
J3	Screw, 1/4-20 x 1/2, Wing Screw	1	151888
J4	Washer, 1/4 SAE Flat	1	151915
<b>K</b>	<b>Assembly, Belt Guard MK-2005 (Arbor Side)</b>	<b>1</b>	<b>-</b>
K1	Casting, Belt Guard Inner	1	156669
K2	Screw, 5/16-18 x 1 3/4 Hex Head	2	151919
K3	Washer, 5/16 Split Lock	3	151747
K4	Washer, 5/16 SAE Flat	3	151754
K5	Pulley, Micro-V, 2.0 Diameter	1	156291
K6	Pulley, Micro-V 2 3/8 Diameter	1	156292
K7	Screw, 5/16-18 x 1/2, Socket Head Set (Cup Point)	4	157084
K8	Key, 1-1/8 x 3/16	2	150344
K9	Belt, Micro-V (Gates 220J-10)	1	156294
K10	Casting, Belt Guard Outer	1	156670
K11	Screw, 5/16-18 x 2 1/2 Hex Head	2	101675
<b>L</b>	<b>Assembly, Belt Guard MK-2005 (Engine Side)</b>	<b>1</b>	<b>-</b>
L1	Casting, Belt Guard Inner	1	156671
L2	Screw, 5/16-16 x 1 Hex Head	3	151743
L3	Washer, 5/16 Split Lock	5	151747
L4	Washer, 5/16 SAE Flat	5	151754
L5	Pulley, Micro-V, 2.0 Diameter	1	156291
L6	Pulley, Micro-V 2 3/8 Diameter	1	156292
L7	Screw, 5/16-18 x 1/2, Socket Head Set (Cup Point)	4	157084

## EXPLODED VIEW AND PARTS LIST

Item	Description	Qty	MK p/n
L8	Key, 1-1/8 x 3/16	2	150344
L9	Belt, Micro-V (Gates 220J-10)	1	156294
L10	Casting, Belt Guard Outer	1	156672
L11	Screw, 5/16-18 x 2 1/2 Hex Head	2	101675
<b>M</b>	<b>Assembly, Table</b>	<b>1</b>	<b>133082</b>
M1	Casting, Table	1	153790
M2	Stop-Rule, Table	1	134387
M3	Screw, 1/4-20 x 3/4 Hex Head	4	152370
M4	Nut, 1/4-20, Keps	4	153941
M5	Wheel, Roller	4	133090
M6	Nut, 5/16-18 Keps	4	153942
M7	Wood Strip, Table Insert	1	156427
M8	Screw, Pan HD Phil. #8 x 1	2	151047
M9	Casting, Squaring Arm	1	132332
M10	Screw, 15/16-18 x 1 1/2, Thumb	1	151155
M11	Nut, 5/16-18 Square	1	151156
<b>N</b>	<b>Assembly, Curtain MK Logo</b>	<b>1</b>	<b>-</b>
N1	Rod, Splash Curtain	1	153956
N2	Curtain, Rear	1	150613
<b>N/A</b>	<b>Assembly, Curtain Plain</b>	<b>1</b>	<b>-</b>
N/A1	Rod, Splash Curtain	1	153956
N/A2	Curtain, Rear Plain	1	134841
<b>P</b>	<b>Assembly, Pan MK Logo</b>		
P1	Pan, Plastic	1	150308
P2	Plug, Rubber Drain Without Hole	1	153439
<b>R</b>	<b>Assembly, Water Pump, Mechanical</b>	<b>1</b>	<b>-</b>
R1	Pump, Water Centrifugal	1	157082
R2	Mount, Water Pump	1	156108
R3	Screw, 5/16-18 x 1/2 Socket Head Cap	2	152473
R4	Screw, 3/8-16 x 1 Hex Head	2	152507
R5	Washer, 3/8 Split Lock	2	150925
R6	Washer, 5/16 Flat Cut	2	101352
R7	Pulley, 2.69 Diameter	1	157048
R8	Screw, 5/16-18 x 1/2 Socket Head Set (Cup Point)	2	157084
R9	Hose, Vinyl 1/2 x .748	3 ft	152410
R10	Clamp, 7/8 Hose	2	154173
<b>S</b>	<b>Assembly, Accessory Pack</b>	<b>1</b>	<b>-</b>
S1	Wrench, Masonry Saw	1	134056
S2	Insert, Accessory	1	153576
S3	Blade, MK-BX30	1	157944
S4	Owner's Manual	1	158320
<b>T</b>	<b>Assembly, Engine Base</b>	<b>1</b>	<b>-</b>
T1	Casting, Engine Base	1	156673
T2	Shaft, Arbor	1	156295
T3	Bearing, Jack Shaft	2	139956
T4	Strap, Engine Belt Tensioning	1	156955
T5	Screw, 5/16-18 x 1 Socket Head Cap	1	151743
T6	Nut, 5/16-18 Hex	6	101196

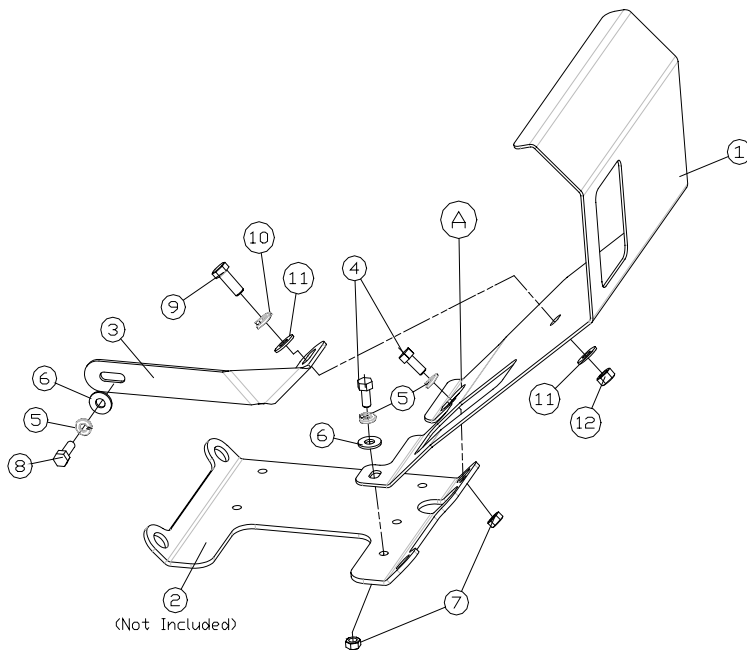
## EXPLODED VIEW AND PARTS LIST

Item	Description	Qty	MK p/n
T7	Washer, 5/16 Split Lock	5	151747
T8	Washer, 5/16 SAE Flat	5	151754
T9	Washer, 7/16 Flat Cut	5	101352
<b>U</b>	<b>Assembly, Plates, Engine Mounting (Top &amp; Bottom)</b>	<b>1</b>	<b>-</b>
U1	Plate, Lower Engine Mounting	1	156296
U2	Screw, 5/16-18 x 1, Socket Head Cap	1	151743
U3	Washer, 5/16 Split Lock	8	151747
U4	Washer, 5/16 SAE Flat	8	151754
U5	Washer, 5/16 Flat Cut	4	151050
U6	Plate, Engine Mounting, Upper	1	156297
U7	Screw, 5/16-18 x 2, Socket Head Cap	4	155494
U8	Washer, Fender, 5/16 ID x 1.0 OD	4	151053
U9	Shock Mount, Upper	4	156961
U10	Shock Mount, Lower	8	156962
U11	Bushing, Stand Off, Shock Mount	4	156104
U12	Nut, 5/16-18 Hex	4	101196
<b>V</b>	<b>Assembly, Engine, Honda 5.5 hp</b>	<b>1</b>	<b>-</b>
V1	Engine, Honda 5.5 hp W/Cyclone Filter	1	156282
V2	Deflector, Honda	1	156710
V3	Screw, 6-32 x 3/8 Pan Head Phillips Self-Tapping Cap	2	153466
V4	Screw, 5/16-18 x 1 1/2, Hex Head Cap	4	152467
V5	Washer, 5/16 Split Lock	7	150747
V6	Washer, 5/16 SAE Flat	6	150754
V7	Nut, 5/16-18, Hex	6	101196
V8	Label, Hot Surface, Caution	1	155578
V9	Label, Refueling Warning	1	155580
V10	Label, California, Danger	1	155581
V11	Label, Lethal Exhaust, Danger	1	155582
V12	Oil Drain, M10 x 3/8 Push	1	157577-01
V13	Guard, Engine	1	159562
V14	Arm, Support	1	159563
V15	Screw, 5/16-18x3/4 Hex Head Cap	2	151369
V16	Screw, 3/8-16x1 Hex Head Cap	1	152507
V17	Washer, 3/8 SAE Flat	2	150923
V18	Washer, 3/8 Split Lock	1	150925
V19	Bolt, 5/16-24x1 Hex Head Tap	1	157646
V20	Nut, 3/8-16 Hex	1	101188

## EXPLODED VIEW AND PARTS LIST

1. Remove P#155494(5/16-18x2 screw), P#156961(upper shock mount), and #151053(fender washer) at location A.
2. Attach support arm(itme3) to engine guard(item 1) with items 9, 10, 11, and 12. Fasten the screw and nut loosely.
3. Fit engine guard onto the engine upper mounting plate.  
Meanwhile, Screw item 8 through items 5 and 6 into the threaded hole on the side of the engine. Do not tighten the screw.
4. Install item 4, 5 and 6 through engine guard and engine upper mounting plate. Fasten the screw and nut loosely.
5. Reinstall items removed listed in step 1.
6. Secure all fasteners after placing engine guard in correct position.

\*\*Note: Drilling two 11/32 dia. holes in engine upper mount (item2) are required on all old style upper mounts.



Item No.	Qty.	Part No.	Descriptions
1	1	159562	Engine Guard
2	n/a	159297	Engine Upper Mount (Not Included)
3	1	159563	Support Arm
4	2	151369	5/16-18x3/4 Hex Screw
5	3	151747	5/16 Lock Washer
6	2	151754	5/16 Flat Washer
7	2	101196	5/16-18 Hex Nut
8	1	157646	5/16-24x1 Hex Screw
9	1	152507	3/8-16x1 Hex Screw
10	1	150925	3/8 Lock Washer
11	2	150923	3/8 Flat Washer
12	1	101188	3/8-16 Hex Nut