

Model MK-470
Tile Saw
Owner's Manual
Parts List &
Operating
Instructions



Warning:

- For your own safety read instruction manual before operating saw.
- Wear eye protection.
- Use splash hood for every operation for which it can be used.
- Disconnect saw before servicing, when changing cutting wheels, and cleaning.
- Use tool only with smooth edge cutting wheels free of openings and grooves.
- Replace damaged cutting wheel before operating.

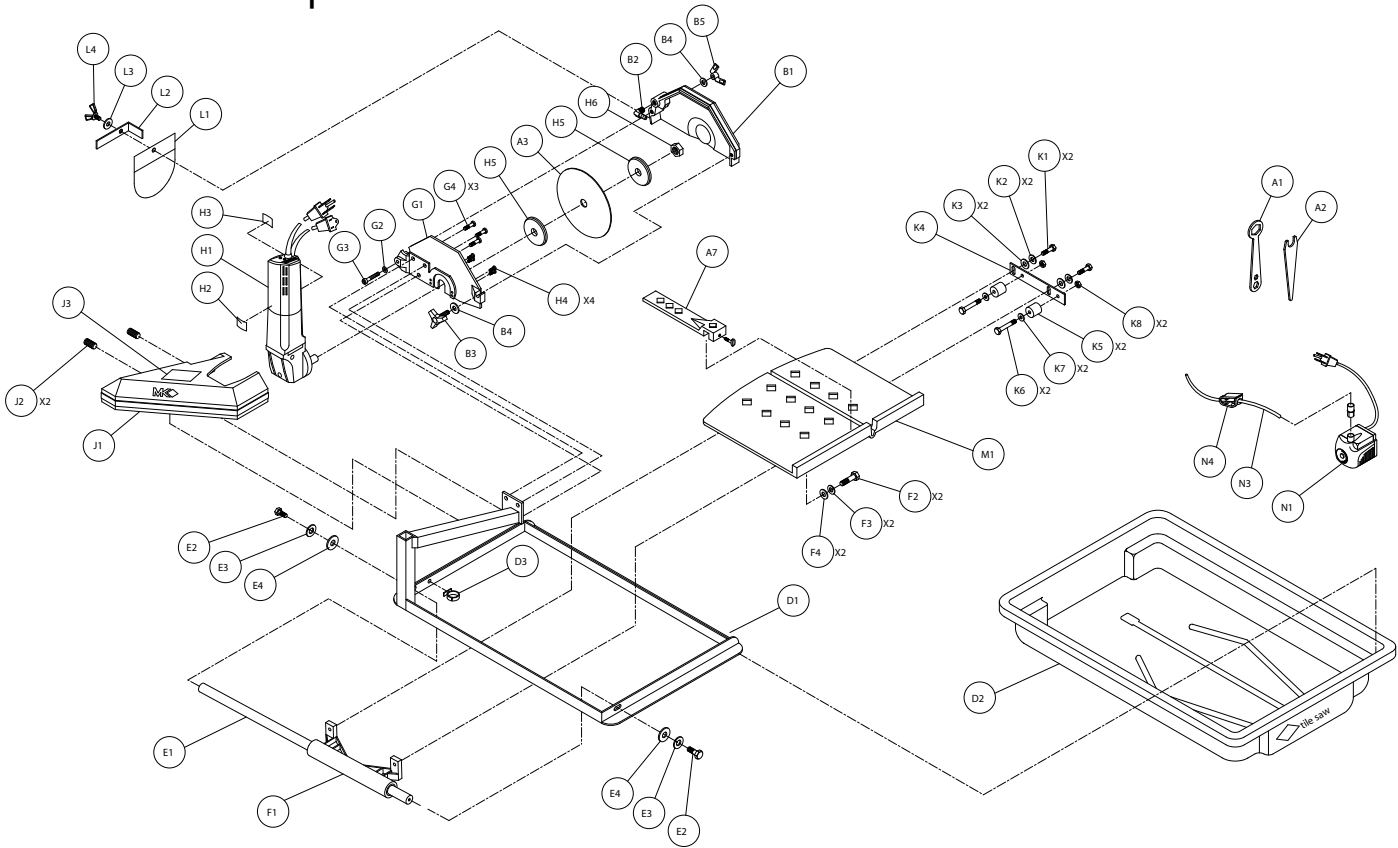
please record the serial number (Located on the cover post casting) of your saw in this block.

serial number

For your warranty to be effective, complete the warranty card (include the serial number) and mail it in as soon as possible.

MK-470 TILE SAW

MK-470 Exploded View



MK-470 Parts List

Model
MK-470 Tile Saw 120v/7.4a, Part # 155779

Item	Description	Qty	Part #
A1	Wrench, Blade Nut, 15/16 Boxed End	1	134684
A2	Wrench, Blade Shaft, 11/16 Open End	1	153450
A3	Blade, 7 Dia X 5/8 Arbor	1	153441
A4*	Owner's Manual	1	156934
A5*	Warranty Card	1	155037
A6*	Information Tag	1	155844
A7	Assembly, Rip Guide w/ Screw, _-20 X _ Thumb	1 1	134551-MK 150991
B	Assembly, Blade Guard, 7"	1	n/a
B1	Guard, Blade, 7"	1	154811-MK
B2	Elbow, 1/8 MNPT X _ BARB 90° Brass	1	154652
B3	Knob, Davies	1	151681
B4	Washer, 5/16 SAE Flat	2	151754
B5	Wingnut, 5/16-18 Nylock	1	151746
D1	Frame	1	155792
D2	Pan, Water	1	155791
D3	Cord Clip, _ Push Mount	1	157259
E	Assembly, Guide Bar, 5/8 Dia	1	151739-MK
E1	Bar, Guide, 5/8 Dia	1	151739
E2	Screw, 5/16-18 X 1 Hex Head Cap	2	151743
E3	Washer, 5/16 Split Lock	2	151747
E4	Washer, 5/16 SAE Flat	2	151754
F1	Bearing, Linear, 5/8 Dia	1	157126
F1A	Bearing, Multilube	2	151781
F2	Screw, 5/16-18 X 1 Hex Head Cap	2	151743
F3	Washer, 5/16 Split Lock	2	151747
F4	Washer, 5/16 SAE Flat	2	151754
G	Assembly, Motor Mount	1	155811-MK
G1	Motor Mount	1	157403
G2	Washer, 5/16 Split Lock	1	151747
G3	Screw, 5/16-18 X 2 1/2 Hex Head Cap, Full Thread	1	151748
G4	Screw, 1/4-20 X 1/2 Flat Head Phillips Cap	3	155812
H1	Motor, 120v/5.3a	1	156428-S
H2	Label, Caution, GFCI, 1 X 2 1/8	1	155678
H3	Label, Caution, Receptacle, 1 X 2 1/8	1	154822
H4	Screw, 10-32 X 5/8 Flat Head Phillips Cap	4	157554
H5	Flange, Blade	2	135830
H6	Nut, 5/8-18 UNF	1	135848
H7	Label, 470 Model	1	156690
J1	Cover, Post	1	155802
J2	Screw, 1/4-20 X 5/16 Socket Head Set	2	154226
J3	Label, Warning, Read Owner's Manual	1	155806
K	Assembly, Roller Wheel Double	1	156586
K1	Screw, 5/16-18 X 1 Hex Head Cap	2	151743
K2	Washer, 5/16 Split Lock	2	151747
K3	Washer, 5/16 SAE Flat	2	151754
K4	Bracket, Roller Wheel	1	156522

K5	Wheel, Roller	2	151799
K6	Screw, 1/4-20 X 1 1/4 Hex Head Cap	2	157145
K7	Washer, 1/4 SAE Flat	2	151915
K8	Nut, 1/4-20 Hex	2	151893
L	Assembly, Splash Curtain	1	155901-MK
L1	Curtain, Splash	1	134841
L2	Bracket, Splash Curtain	1	155901
L3	Washer, 1/4 SAE Flat	1	151915
L4	Wingscrew, 1/4-20 X 1/2	1	151888
M	Table, 470	1	156536
N	Assembly, PES-100 120v Water Pump	1	155987-MK
N1	Pump, Water, PES-100 120v	1	155987
N3	Hose, Vinyl, 1/4 ID	2'	132951
N4	Clamp, Flow, 1/4-1/2	1	154394
N5*	Owner's Manual, Water Pump	1	155745

*Not shown in exploded view

Rev 12/00