

MK-770 EXP TILE SAW

OWNERS MANUAL



TILE SAW OWNER'S MANUAL & OPERATING INSTRUCTIONS



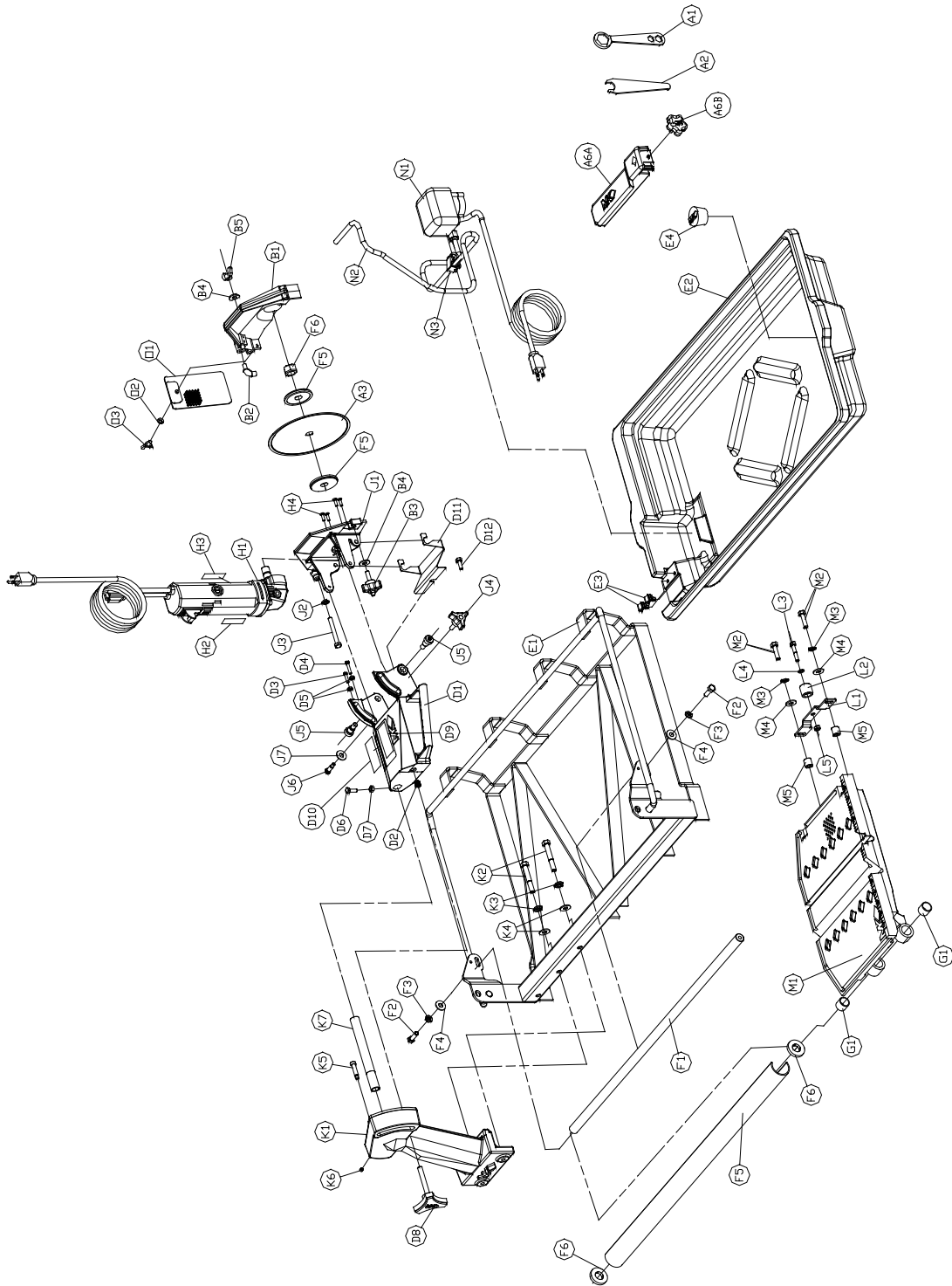
CAUTION

READ SAFETY
AND GENERAL
INSTRUCTIONS
CAREFULLY
BEFORE USING
SAW FOR THE
FIRST TIME



SERIAL NUMBER

YOU SHOULD RECORD THE SERIAL NUMBER OF YOUR SAW ON THIS OWNER'S MANUAL AND ON THE WARRANTY CARD, WHICH MUST BE SENT IN TO BE EFFECTIVE. BE SURE TO INCLUDE ALL PERTINENT INFORMATION REQUIRED.



MK-770 EXP PARTS LIST

PARTS LIST:

Item	Description	Qty	Part #
A	Accessories	1	n/a
A1	Wrench, Blade Nut, 15/16 Boxed End	1	134684
A2	Wrench, Blade Shaft, 11/16 Open End	1	153450
A3	Blade, 7 x 5/8 x .060	1	153441
A4	Owner's Manual, 770EXP	1	160434
A5	Warranty Card	1	155037
A6	Assembly, Large Die Cast Rip Guide	1	n/a
	A6A) Rip Guide (comp)	1	159751
	A6B) Knob, Rubber (1/4-20x3/4)	1	159428-1
A7	Carton, Accessory Pack	1	153366
A8	Sell Sheet, Tile Accessory	1	156915
B	Assembly, Blade Guard, 7"	1	154811-MK
B1	Guard, 7" Blade (comp)	1	154811
	Guard, 7" Blade (raw)	1	154810
B2	Elbow, 1/8 MNPT X 1/4 BARB 90° Brass	1	154652
B3	Knob, Davies	1	151681
B4	Washer, 5/16 SAE Flat	2	151754
B5	Wing nut, 5/16-18 Nylock	1	151746
C	Carton	1	n/a
C1	Carton, MK-770 EXP	1	160433
D	Assembly, Cutting Head	1	160042
D1	Cutting Head (Comp)	1	159937
	Cutting Head (Raw)	1	159936
D2	Helicoil, 3/8-16x3/8	1	153486
D3	Screw, Slotted Pan Head, 10-32x3/4	1	151750
D4	Screw, Slotted Pan Head, 10-32x1	1	151751
D5	Nut, Hex 10-32	2	151749
D6	Screw, Hex Head, 1/4-20x3/4	1	152370
D7	Nut, Hex, 1/4-20	1	151893
D8	Knob, Tri Plastic	1	156770-04
D9	Label, Warning, Read Owner's Manual	1	155806
D10	Label, Serial Number, UL/CSA Mark	1	157249-04
D11	Cover, Splash	1	160279
D12	Screw, Hex Head, 1/4-20x3/8	1	153526
E	Frame	1	n/a
E1	Frame	1	153003
E2	Pan, Water	1	160121
E3	Clip, Cord, 1/4 Push Mount	2	157259
E4	Plug, Water Drain	1	159529
E5	Strap, 9" Drain Plug	1	159530
F	Assembly, Guide Bar, 3/4 Dia	1	n/a
F1	Bar, Guide, 3/4 Dia	1	134759
	Steel, C1045 Chromerod, 3/4 Dia x 2.25'	1	154185
F2	Screw, 5/16-18 X 1 Hex Head Cap	2	151743
F3	Washer, 5/16 Split Lock	2	151747
F4	Washer, 5/16 SAE Flat	2	151754

MK-770 EXP PARTS LIST (cont...)

G	Linear Bearing, 3/4 Dia	1	n/a
G1	Bearing, Multi lube	2	152227
H	Assembly, 120v Motor	1	n/a
H1	Motor, 120v 7.4A, Ryobi	1	156428-R
H2	Label, Caution, GFCI, 1 X 2 1/8	1	155678
H3	Label, Caution, Receptacle, 1 X 2 1/8	1	154822
H4	Screw, 10-32 X 5/8 Flat Head Phillips Cap	4	157554
H5	Flange, Blade	2	135830
H6	Nut, 5/8-18	1	135848
J	Assembly, Motor Mount	1	160052
J1	Motor Mount (Comp)	1	159941
	Motor Mount (Raw)	1	159940
J2	Washer, 5/16 Split Lock	1	151747
J3	Screw, 5/16-18 x 2-1/2 Hex Head Cap, Full Thread	1	151748
J4	Knob, Davies	1	151681
J5	Bolt, Shoulder, Soc Head, 1/2 x 1/2	2	151753
J6	Bolt, Shoulder, Soc Head, 5/16 x 5/8	1	152137
J7	Washer, 5/16 SAE Flat	1	151754
K	Post	1	n/a
K1	Post (Comp)	1	160199
	Post (Raw)	1	160198
K2	Screw, Hex Head, 3/8-16x2"	2	153485
K3	Washer, Lock, 3/8	2	150925
K4	Washer, Flat SAE, 3/8	2	150923
L	Assembly, Roller Wheel	1	151756
L1	Bracket, Roller Wheel	1	154021
L2	Wheel, Roller	1	151799
L3	Screw, 1/4-20 X 1 1/4 Hex Head Cap	1	157145
L4	Washer, 1/4 SAE Flat	1	151915
L5	Nut, 1/4-20 Hex	1	151893
M	Table		n/a
M1	Table (Comp)	1	160268
	Table (Raw)	1	159938
M2	Screw, 5/16-18 X 1 Hex Head Cap	2	151743
M3	Washer, 5/16 Split Lock	2	151747
M4	Washer, 5/16 SAE Flat	2	151754
M5	Spacer, 1/2x5/16x3/8	2	160264
N	Assembly, 120v Water Pump	1	n/a
N1	Pump, Water, 120v	1	151271
N2	Hose, Vinyl, 1/4 ID x 2'	1	132951
N3	Clamp, Flow, 1/4-1/2	1	154394
O	Assembly, Splash Curtain	1	155901-MK
O1	Guard, Splash	1	160310
O2	Washer, 1/4 SAE Flat	1	151915
O3	Wing screw, 1/4-20 X 1/2	1	151888