

# PX-3 PAVER XTREME

## OWNERS MANUAL



DRY PAVER SAW  
OWNER'S MANUAL &  
OPERATING INSTRUCTIONS

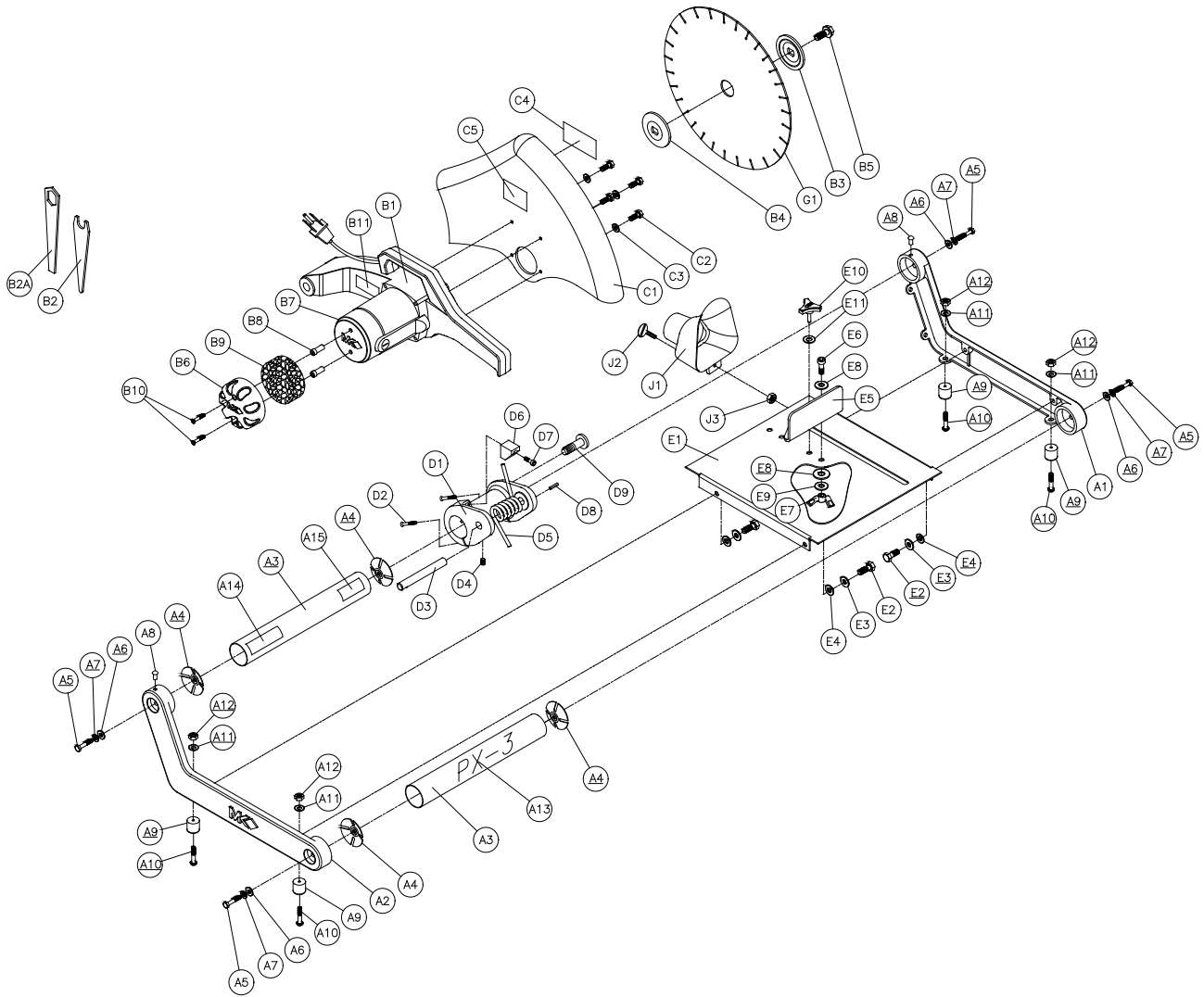
### CAUTION

READ SAFETY  
AND GENERAL  
INSTRUCTIONS  
CAREFULLY  
BEFORE USING  
SAW FOR THE  
FIRST TIME



## SERIAL NUMBER

YOU SHOULD RECORD THE SERIAL NUMBER  
OF YOUR SAW ON THIS OWNER'S MANUAL  
AND ON THE WARRANTY CARD, WHICH MUST  
BE SENT IN, TO BE EFFECTIVE. BE SURE  
TO INCLUDE ALL PERTINENT INFORMATION  
REQUIRED.



**EXPLODED VIEW**

## PX-3 PARTS LIST

### PARTS LIST:

Item	Description	Qty	MK p/n
A	Assembly, Frame	1	n/a
A1	Casting, Frame, Right (comp)	1	160246
A2	Casting, Frame, Left (comp)	1	160248
A3	Support, Horizontal Frame	2	160249
A4	Tube Connector, ¼-20	4	157930
A5	Screw, ¼-20 x 2" Hex Head Cap	4	158282
A6	Washer, ¼ SAE Flat	4	151915
A7	Washer, ¼ Split Lock	4	152591
A8	Drive Stud, Round Head Grooved #16 (¼) x ½	2	158071
A9	Bumper w/ Washer, 1.0 (foot)	4	160418
A10	Screw, #8-32 x 1 Pan Head Phillips	4	160446
A11	Washer, #8 Split Lock	4	160447
A12	Nut, Hex #8-32	4	153549
A13	Label, Adhesive "PX3"	1	160419
A14	Label, Prop 65 Warning	1	158322
A15	Label, Extension Cord Warning	1	155672
B	Assembly, Cutting Head	1	n/a
B1	Assembly, Arm w/ Motor & Handle	1	160251
B2	Wrench, Blade Nut, 14mm	1	158406
B2A	Wrench, Blade Shaft	1	158110
B3	Flange, Outer Blade (stamped)	1	158105
B4	Flange, Inner Blade (turned)	1	158106
B5	Screw, M10-1.5 x 20mm Hex Flange (blade retaining)	1	158107
B6	Cap, Motor	1	157877
B7	Cap, Motor Filter	1	157878
B8	Spacer Pin, Cap Screw	2	157879
B9	Element, Filter	1	157729
B10	Screw #8 x 1 ½, Combo Head Pan, Self Tapping	2	158157
B11	Label, Safety Caution	1	155576
C	Assembly, Blade Guard	1	n/a
C1	Casting, Blade Guard (comp)	1	160258
C2	Screw, M6-1 x 20mm Hex Head Cap	4	158158
C3	Washer, M6 Split Lock	4	158159
C4	Decal, Adhesive "Paver Xtreme"	1	160420
C5	Tag, Serial	1	158096
D	Assembly, Pivot Clamp	1	n/a
D1	Casting, Pivot Clamp (comp)	1	160358
D2	Screw, ¼-20 x 1 ½ Socket Hd. Cap	2	154683
D3	Pin, Pivot .625 x 5.6	1	157645
D4	Screw, Set ¼-20 x ¼ Cup Point	1	157528
D5	Spring, Torsion	1	160252
D6	Stop Block	1	158226
D7	Screw, ¼-20 x ¾, Socket Head Cap	1	152587
D8	Pin, Grooved Dowel 5/16 x 1 ¼	1	160458
D9	Lock, Cutting Head	1	160460

**PX-3 PARTS LIST (cont...)**

E	Assembly, Table	1	n/a
E1	Table (comp) w/ Plastic Over Mold	1	160409
E2	Screw, 5/16-18 x ¾ Hex Head Cap	4	151369
E3	Washer, 5/16 SAE Flat	4	151754
E4	Washer, 5/16 Split Lock	4	151747
E5	Backstop, Table	1	160349
E6	Screw, 3/8 x ½ Socket Head Shoulder, 5/16-18 x 1.0	1	160459
E7	Nut, Wing Nylok 5/16-18	1	151746
E8	Washer, 3/8 SAE Flat	2	150923
E9	Washer, 5/16 SAE Flat	1	151754
E10	Knob, 3 Prong 3/8-16 x 1	1	156175
E11	Washer, 3/8 Split Lock	1	150925
F	Assembly, Packaging Carton	1	n/a
F1	Carton, MK-PX3	1	160421
F2	Insert, Carton		
G	Assembly, Accessory Pack	1	n/a
G1	Blade, 14" PX10, Segmented w/ Cooling Holes (6mm rim height)	1	160448
G2	Warranty Card	1	155037
G3	Sell Sheet, Tile Accessory	1	156915
G4	Extra Filter Element	1	157729
G5	Owners Manual, MK-PX3	1	160445
J	Assembly, PX3 Dust Collector	1	n/a
J1	Nozzle, PX3 2 ½" Dust	1	160408
J2	Screw, 1/4-20 x 1 Shoulder Thumb	1	160461
J3	Nut, ¼-20 Hex w/ Washer	1	153941